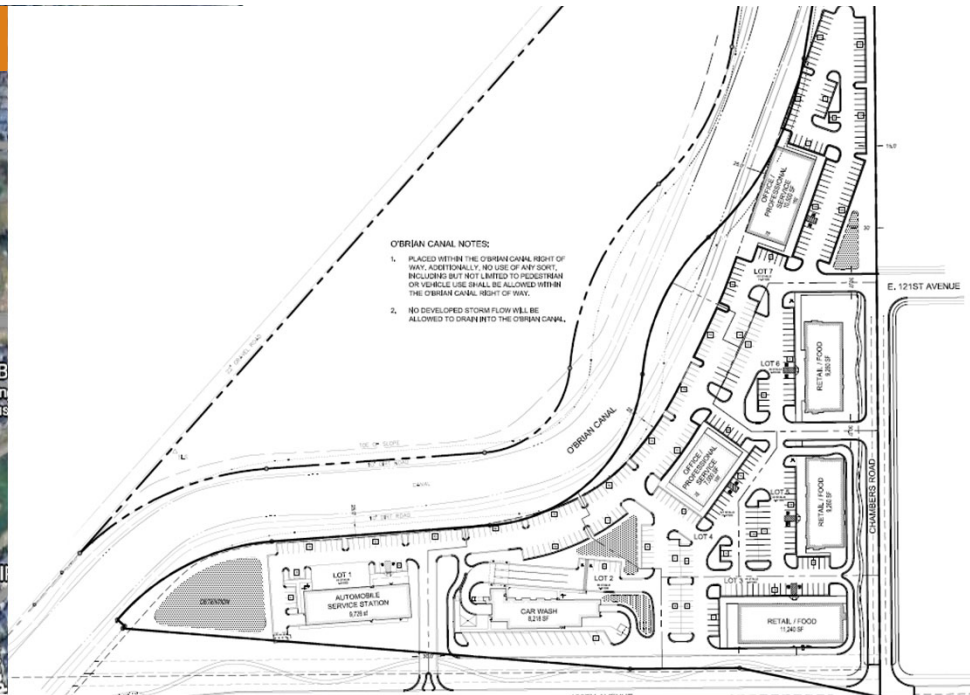




Adams Crossing



Contact:

Brian Phetteplace – Deputy Economic Director
 bphetteplace@c3gov.com



- Soon-to-be-annexed commercial parcel of strategic importance to City strategic planning.
- Planned used include gas station, commercial padding, offices and restaurants.
- Located near some of the most affluent households in the region, as well as a modern recreation center.
- Opportunity to establish a business in a high income but underserved market.